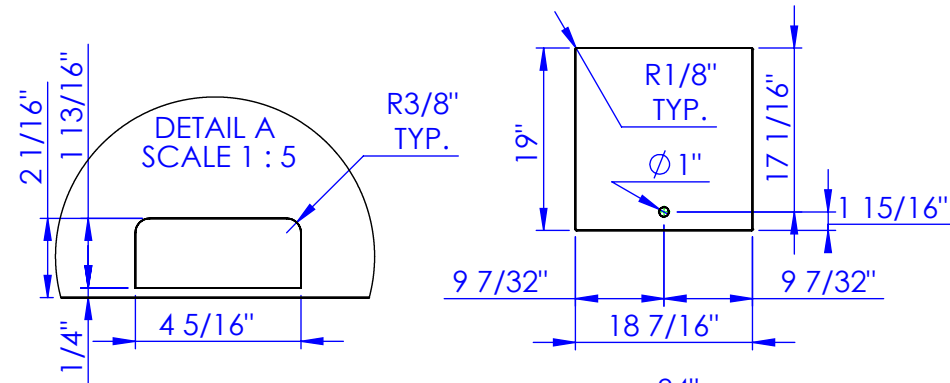
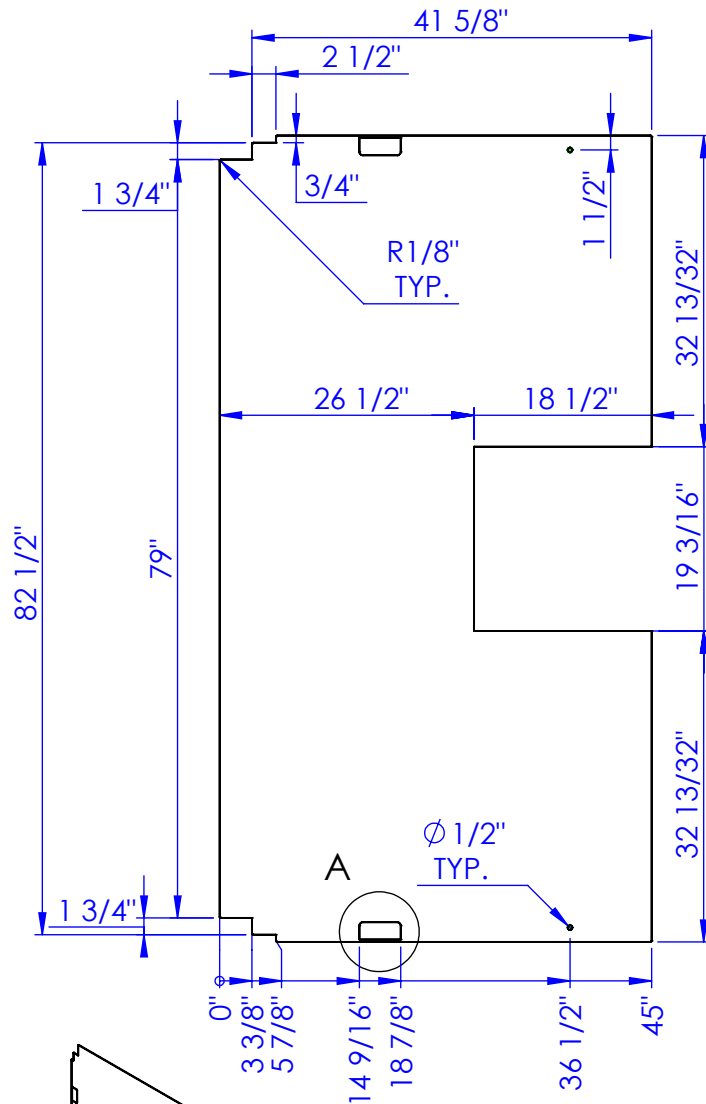
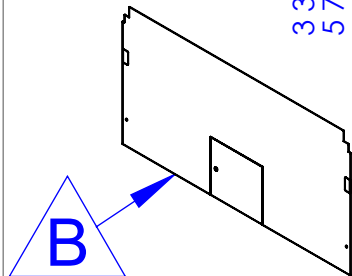


ITEM NO.	PART NUMBER	DESCRIPTION	MATERIAL	QTY.
1	FP-APEX-101	FRONT FLOOR 100 APEX	1/8" FLOOR PLATE	1
2	FP-PS-FLPL-LID	PS LID	1/8" FLOOR PLATE	1

REVISIONS		DATE	APPROVED
REV.	DESCRIPTION		
B	REV STAKE POCKET SIZE	12/22/2011	



NOTE:  
1. EDGES MUST BE COMMON BETWEEN FLOOR & DOOR.  
TO INSURE PATTERN MATCH AT ASSEMBLY.



**PROPRIETARY AND CONFIDENTIAL**  
THE INFORMATION CONTAINED IN THIS  
DRAWING IS THE SOLE PROPERTY OF TRIPLE  
C INC. ANY REPRODUCTION IN PART OR  
AS A WHOLE WITHOUT THE WRITTEN  
PERMISSION OF TRIPLE C INC. IS PROHIBITED.

DIMENSIONS ARE IN INCHES TOLERANCES: FRACTIONAL $\pm 1/16$ ANGULAR: MACH $\pm 1$ BEND $\pm$ TWO PLACE DECIMAL $\pm 010$ THREE PLACE DECIMAL $\pm 005$		NAME	DATE
MATERIAL 1/8" FLOOR PLATE		DRAWN	HEATH 12/22/2011
DO NOT SCALE DRAWING		PART #	FP-APEX-101
		ASM #	
		COMMENTS: FRONT FLOOR, 100 APEX	

P.O. BOX 248,  
SABETHA, KS 66534

**TRIPLE C**  
INC.

SIZE A	DWG. NO. 00-2209 B	REV. B
SCALE: 1:20	WEIGHT:	SHEET 1 OF 1